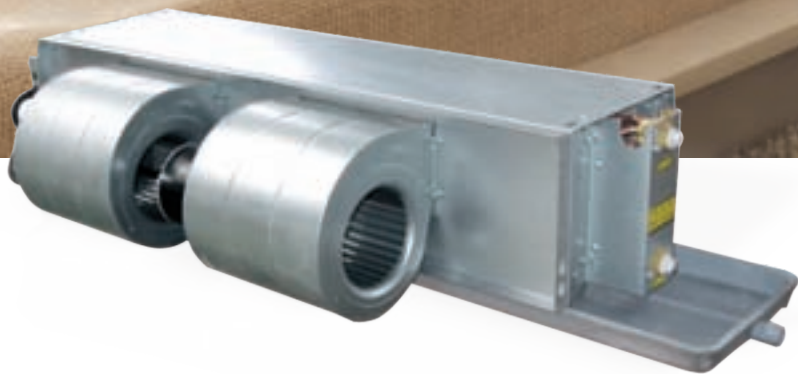


Ceiling conceal ducted type fan coil unit



Characteristic

1、 Fan

Our fans are made by international professional fan manufacture with stable quality and reliable character with routine dynamic balance precise debug.
Fan runs stably and quietly.

2、 Water collection tray

Tensile plate with high-grade, smooth surface spray, corrosion resistance, anti-rust;
One-time stamping molding process, without weld or solder joint;
Adopt the overall thermal insulation, in order to avoid secondary condensate drip tray;
Two-way diversion mouth slope shape design, condensate water speed, reduce the water remain inside the tray, effectively reduce the rate of bacterial growth; large condensate tray designed to eliminate surface cooler and access to water dripping outside the interface of the phenomenon of condensation

3、 Heat exchanger

Hydrophilic aluminum fin to wear high quality copper tube, high heat exchanging efficiency, large heat exchanging area, low pressure dropping, large cooling and heating capacity.
High quality material copper can support big water pressure.

4、 Air return box is optional, which can ease installation, reducing construction cost

5、 Integrated models

Air volume from 340 to 2380m³/h, include 9 models and also different static pressure type;

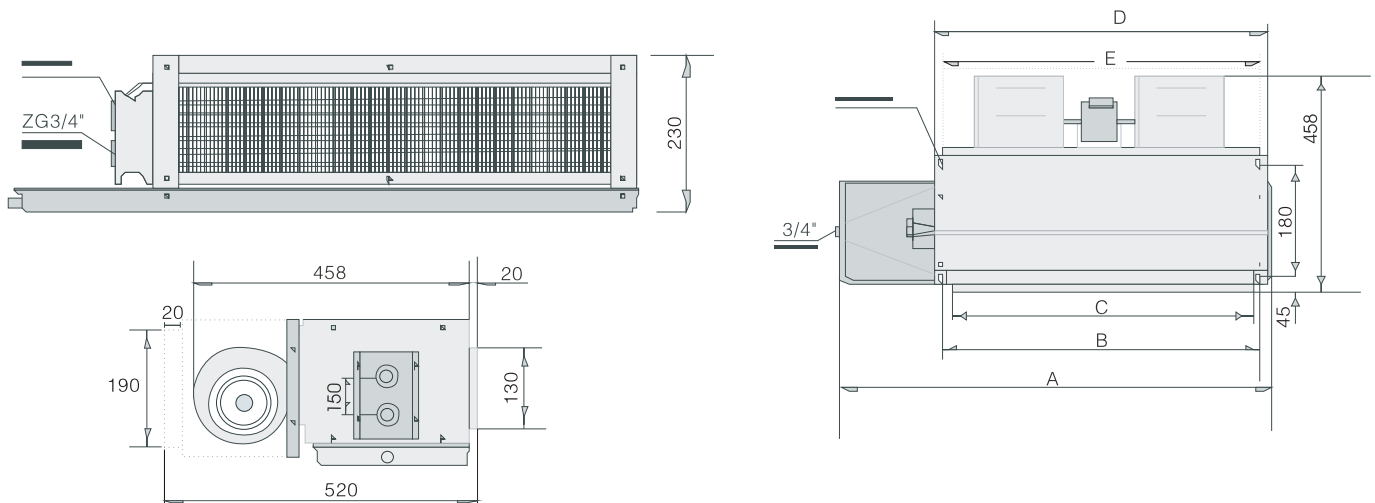
6、 High efficiency

Adopt good quality heat exchanger and fan, which is benefit to the heat exchanging capacity and efficiency

7、 Symmetrical design, easy installation

Symmetrical design, it is easy to change the unit from left(right)water tube connection to right(left) connection

Installing dimension



| Model | MFP-34WA | MFP-51WA | MFP-68WA | MFP-85WA | MFP-102WA | MFP-136WA | FP-170WA | MFP-204WA | MFP-238WA |
|-------|----------|----------|----------|----------|-----------|-----------|----------|-----------|-----------|
| A | 700 | 810 | 930 | 990 | 1070 | 1328 | 1593 | 1708 | 1928 |
| B | 485 | 597 | 707 | 778 | 877 | 1115 | 1380 | 1495 | 1715 |
| C | 448 | 560 | 670 | 741 | 840 | 1078 | 1343 | 1458 | 1678 |
| D | 515 | 627 | 737 | 808 | 907 | 1145 | 1410 | 1525 | 1745 |
| E | 475 | 587 | 697 | 768 | 867 | 1105 | 1370 | 1485 | 1705 |



▶ Ceiling conceal ducted type fan coil unit (2-tube system)

| Model(2-tube system) | | | MFP-34WA | MFP-51WA | MFP-68WA | MFP-85WA | MFP-102WA | MFP-136WA | MFP-170WA | MFP-204WA | MFP-238WA | |
|-----------------------------------|-------------------|-------------------|---|-----------------------|-------------|-------------|-------------|--------------|--------------|--------------|--------------|--------------|
| Power supply | | | 220V,50HZ,1PH | | | | | | | | | |
| Air volume | H | m ³ /h | 340 | 510 | 680 | 850 | 1020 | 1360 | 1700 | 2040 | 2380 | |
| | M | | 270 | 380 | 515 | 660 | 765 | 1040 | 1280 | 1550 | 1800 | |
| | L | | 190 | 260 | 340 | 430 | 530 | 710 | 860 | 1050 | 1280 | |
| Static pressure | | | Pa | 12(30) | 12(30) | 12(30) | 12(30) | 12(30) | 12(30) | 12(30) | 12(30) | |
| Cooling capacity | TH | H | W | 1800 | 2700 | 3600 | 4500 | 5400 | 7200 | 9000 | 10800 | 12600 |
| | | | BTU/h | 6142 | 9212 | 12283 | 15354 | 18425 | 24566 | 30708 | 36850 | 42991 |
| | | SH | W | 1341 | 2012 | 2682 | 3353 | 4023 | 5364 | 6705 | 8046 | 9387 |
| | | | BTU/h | 4575 | 6865 | 9151 | 11440 | 13726 | 18302 | 22877 | 27453 | 32028 |
| | TH | M | W | 1458 | 2187 | 2916 | 3645 | 4374 | 5832 | 7290 | 8748 | 10206 |
| | | | SH | W | 1152 | 1728 | 2304 | 2880 | 3455 | 4607 | 5759 | 6911 |
| | | L | W | 1134 | 1701 | 2268 | 2835 | 3402 | 4536 | 5670 | 6804 | 7938 |
| | | | SH | W | 930 | 1395 | 1860 | 2325 | 2790 | 3720 | 4649 | 5579 |
| Heating capacity | H | W | 2700 | 4050 | 5400 | 6750 | 8100 | 10800 | 13500 | 16200 | 18900 | |
| | M | | 2079 | 3119 | 4158 | 5198 | 6237 | 8316 | 10395 | 12474 | 14553 | |
| | L | | 1634 | 2450 | 3267 | 4084 | 4901 | 6534 | 8168 | 9801 | 11435 | |
| Noise | High speed | 12Pa | 35 | 36 | 38 | 40 | 43 | 44 | 45 | 46 | 49 | |
| | | 30Pa | 39 | 41 | 43 | 45 | 48 | 49 | 50 | 52 | 54 | |
| | | dB(A) | 34 | 41 | 43 | 45 | 48 | 49 | 50 | 52 | 54 | |
| Power input | High speed | 12Pa | 34 | 41 | 59 | 73 | 91 | 118 | 146 | 182 | 216 | |
| | | 30Pa | 41 | 54 | 65 | 82 | 98 | 132 | 168 | 206 | 247 | |
| | | W | 41 | 54 | 65 | 82 | 98 | 132 | 168 | 206 | 247 | |
| Waterflow volume | High speed | m ³ /h | 0.31 | 0.46 | 0.62 | 0.77 | 0.93 | 1.23 | 1.54 | 1.85 | 2.16 | |
| | Pressure dropping | kPa | 7 | 15 | 18 | 23 | 28 | 30 | 22 | 30 | 36 | |
| Water tube connection(inlet) | | | ZG3/4" | ZG3/4" | ZG3/4" | ZG3/4" | ZG3/4" | ZG3/4" | ZG3/4" | ZG3/4" | ZG3/4" | |
| Water tube connection(outlet) | | | ZG3/4" | ZG3/4" | ZG3/4" | ZG3/4" | ZG3/4" | ZG3/4" | ZG3/4" | ZG3/4" | ZG3/4" | |
| Coil | | | Type Hydrophilic aluminum fin to wear copper tube | | | | | | | | | |
| Maximum working pressure | | | MPa | 1.6 | 1.6 | 1.6 | 1.6 | 1.6 | 1.6 | 1.6 | 1.6 | |
| Condensation pipe size (diameter) | | | mm | DN20(External thread) | | | | | | | | |
| Net dimension | | | L×W×H | 700×458×230 | 810×458×230 | 930×458×230 | 990×458×230 | 1070×458×230 | 1328×458×230 | 1593×458×230 | 1708×458×230 | 1928×458×230 |
| Net weight | | | kg | 15 | 18 | 19 | 21 | 28 | 30 | 34 | 37 | 40 |

▶ Ceiling conceal ducted type fan coil unit (4-tube system)

| Model (4-tube system) | | | MFP-34WA4 | MFP-51WA4 | MFP-68WA4 | MFP-85WA4 | MFP-102WA4 | MFP-136WA4 | MFP-170WA4 | MFP-204WA4 | MFP-238WA4 | |
|-----------------------------------|--------------|-------------------|---|-----------------------|-------------|-------------|-------------|--------------|--------------|--------------|--------------|--------------|
| Power supply | | | 220V,50HZ,1PH | | | | | | | | | |
| Air volume | H | m ³ /h | 340 | 510 | 680 | 850 | 1020 | 1360 | 1700 | 2040 | 2380 | |
| | M | | 270 | 380 | 515 | 660 | 765 | 1040 | 1280 | 1550 | 1800 | |
| | L | | 190 | 260 | 340 | 430 | 530 | 710 | 860 | 1050 | 1280 | |
| Static pressure | | | Pa | 12(30) | 12(30) | 12(30) | 12(30) | 12(30) | 12(30) | 12(30) | 12(30) | |
| Cooling capacity | TH | H | W | 1800 | 2700 | 3600 | 4500 | 5400 | 7200 | 9000 | 10800 | 12600 |
| | | | BTU/h | 6142 | 9212 | 12283 | 15354 | 18425 | 24566 | 30708 | 36850 | 42991 |
| | | SH | W | 1341 | 2012 | 2682 | 3353 | 4023 | 5364 | 6705 | 8046 | 9387 |
| | | | BTU/h | 4575 | 6865 | 9151 | 11440 | 13726 | 18302 | 22877 | 27453 | 32028 |
| | TH | M | W | 1458 | 2187 | 2916 | 3645 | 4374 | 5832 | 7290 | 8748 | 10206 |
| | | | SH | W | 1152 | 1728 | 2304 | 2880 | 3455 | 4607 | 5759 | 6911 |
| | | L | W | 1134 | 1701 | 2268 | 2835 | 3402 | 4536 | 5670 | 6804 | 7938 |
| | | | SH | W | 930 | 1395 | 1860 | 2325 | 2790 | 3720 | 4649 | 5579 |
| Heating capacity | H | W | 1080 | 1620 | 2160 | 2700 | 3240 | 4320 | 5400 | 6480 | 7560 | |
| | M | | 832 | 1248 | 1663 | 2079 | 2495 | 3326 | 4158 | 4990 | 5821 | |
| | L | | 654 | 980 | 1307 | 1634 | 1960 | 2614 | 3267 | 3920 | 4574 | |
| Noise | High speed | 12Pa | 35 | 36 | 38 | 40 | 43 | 44 | 45 | 46 | 49 | |
| | | 30Pa | 39 | 41 | 43 | 45 | 48 | 49 | 50 | 52 | 54 | |
| | | dB(A) | 34 | 41 | 43 | 45 | 48 | 49 | 50 | 52 | 54 | |
| Power input | High speed | 12Pa | 34 | 41 | 59 | 73 | 91 | 118 | 146 | 182 | 216 | |
| | | 30Pa | 41 | 54 | 65 | 82 | 98 | 132 | 168 | 206 | 247 | |
| | | W | 41 | 54 | 65 | 82 | 98 | 132 | 168 | 206 | 247 | |
| Waterflow volume | High speed | Cooling tube | m ³ /h | 0.31 | 0.46 | 0.62 | 0.77 | 0.93 | 1.23 | 1.54 | 1.85 | 2.16 |
| | | Heating tube | m ³ /h | 0.12 | 0.18 | 0.25 | 0.31 | 0.37 | 0.49 | 0.62 | 0.74 | 0.86 |
| Pressure dropping | Cooling tube | kPa | 7 | 15 | 18 | 23 | 28 | 30 | 22 | 30 | 36 | |
| | | Heating tube | 2.8 | 6 | 7.2 | 9.2 | 11.2 | 12 | 8.8 | 12 | 14.4 | |
| Water tube connection(inlet) | | | ZG3/4" | ZG3/4" | ZG3/4" | ZG3/4" | ZG3/4" | ZG3/4" | ZG3/4" | ZG3/4" | ZG3/4" | |
| Water tube connection(outlet) | | | ZG3/4" | ZG3/4" | ZG3/4" | ZG3/4" | ZG3/4" | ZG3/4" | ZG3/4" | ZG3/4" | ZG3/4" | |
| Coil | | | Type Hydrophilic aluminum fin to wear copper tube | | | | | | | | | |
| Maximum working pressure | | | MPa | 1.6 | 1.6 | 1.6 | 1.6 | 1.6 | 1.6 | 1.6 | 1.6 | |
| Condensation pipe size (diameter) | | | mm | DN20(External thread) | | | | | | | | |
| Net dimension | | | L×W×H | 700×458×230 | 810×458×230 | 930×458×230 | 990×458×230 | 1070×458×230 | 1328×458×230 | 1593×458×230 | 1708×458×230 | 1928×458×230 |
| Net weight | | | kg | 17 | 19 | 20 | 23 | 30 | 32 | 37 | 40 | 43 |